

TOWAGE TARIFF 2017

LISBON PORT

PORTUGAL (TAGUS RIVER)

24/7 Tugboat Orders and Coordination - Operations Central

Phone: +351 265 719 132
Mobile: +351 969 200 919

Fax: +351 265 719 290
VHF : Channel 16
E-Mail : OPERATIONS.PTL@towagelisbon.pt

Safety and Environmental Office

Mobile: +351 935 530 079
E-Mail : gas.rebonave@rebonave.pt
(both REBONAVE and PTL operations)

Invoicing

Phone: +351 265 530 040
E-Mail : TUGS.PTL@towagelisbon.pt

Note :

All orders to be directed through the Operations Central.



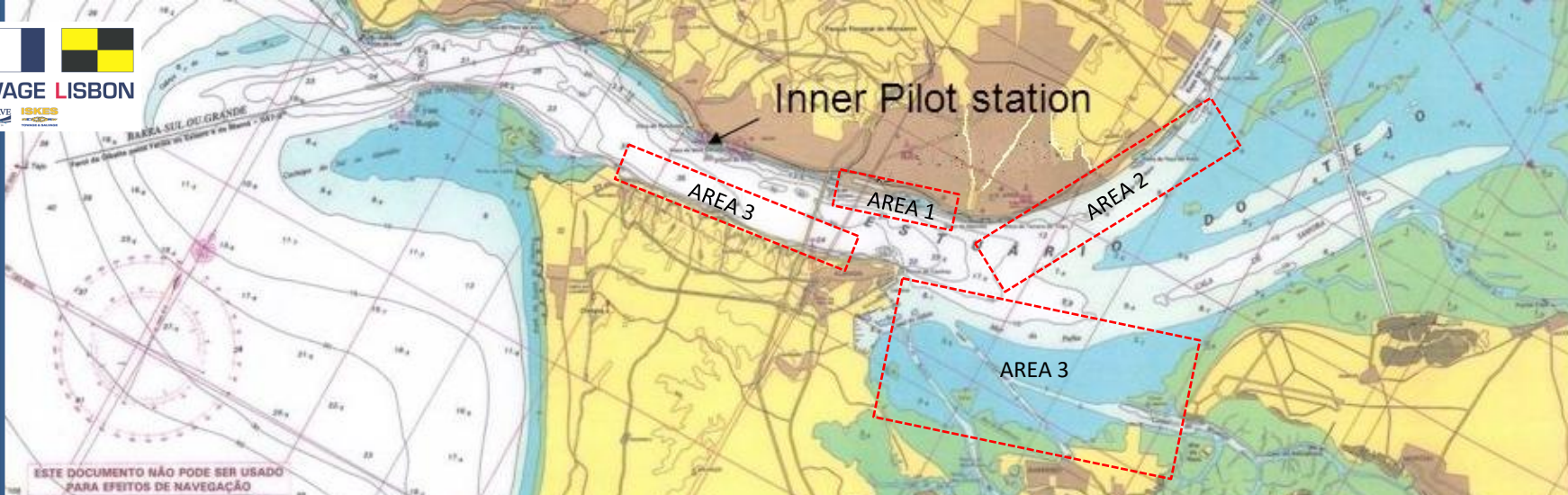
PORT TOWAGE LISBON



PORT TOWAGE LISBON, Lda (PTL)

MAIN OFFICE:

Lat 38° 31'23" N | Long 008° 53'13" W
Ladeira da Ponte de S. Sebastião, N° 3
2900 - 564 Setúbal
PORTUGAL
Email: TUGS.PTL@towagelisbon.pt
Phone: +351 265 530 040
www.towagelisbon.pt



REGULAR ASSISTANCE TABLES										FUEL TAX TABLE (BAF)					
TUGBOAT GENERAL	GROSS TONNAGE (GT)		1	2	3	MOORING LAUNCHES	1	2	3	MOORING MAN	Euros/ m3 // MGO		Fuel Tax // (%)		
			≤ 01 Hr		≤ 02 Hr		≤ 01 Hr		≤ 02 Hr		≤ 01 Hr		≤ 02 Hr		
	≤ 5.000 GT		605	1.035	1.124		290	350	550		130	135	175	< 600	5,00
	5.001 a	10.000	725	1.170	1.285						175	175	220	600-649	6,00
10.001 a	20.000	940	1.440	1.605	230	230				260	650-699	7,00			
20.001 a	30.000	1.200	1.730	1.970	275	275				315	700-749	8,00			
30.001 a	40.000	1.340	1.850	2.190	≥ 800					10,00					
40.001 a	50.000	1.420	1.960	2.375	For each following step with € 49 intervals					Increment of 1,00%					
50.001 a	60.000	1.490	1.995	2.495											
60.001 a	70.000	1.650	2.100	2.640											
>70.000		1.765	2.200	2.735											

SHIFTING (TUGBOAT and MOTOR LAUNCHES)		
GROSS TONNAGE (GT)	within the same area	between two different areas
Base Tariff – Area where the shifting was initiated	(≤ 1,5 Hrs)	(≤ 2,5 Hrs)
Any vessel/ship	Surcharge of 50%	Surcharge of 80%

ADDITIONAL SERVICES TARIFF										
TUGBOAT	GROSS TONNAGE (GT)	Tugboat rating	Service (Hour)	MOORING L.	Conventional Motor Launch	Service (Hour)	MOORING M.	Service (Hr/HH/EQ)	€ (Hr/HH/EQ)	
	Any vessel/ship	below 750 H.P.	318 €		179 €	Personnel Equipment Transportation		179 €	Mooring Man	52,0 € / Hr
		up to 2.000 H.P.	420 €						Forklift with driver	89,1 € / Hr
		up to 3.000 H.P.	605 €						Handpallet	13,5 € / Hr
up to 4.000 H.P.		728 €	Van with Driver	96,5 € / Hr						

SERVICES REQUEST

- Services are to be requested with at least 2 (two) hours pre-advance notice, before “confirmed service time”;
- Services requested with less than 2 (two) hours pre-advance notice, will be subject to a surcharge of 1 (one) hour for each tugboat and mooring launch, ADDITIONAL SERVICES TARIFF, and are subject to our fleet availability.

CANCELLATIONS AND/OR ALTERATIONS TO REQUESTED SERVICES

- “Confirmed service time” delays on requested services, higher than ½ (half) hour, will be subject to a surcharge of indivisible periods, ADDITIONAL SERVICES TABLE”, and start counting from the “confirmed service time”;
- Tugboat and mooring launches services requested for normal working days, Saturdays, Sundays and Holidays, from 00:00 to 24:00 hours, and later on cancelled or postponed:
- MORE than 2 (two) hours pre advanced notice, before “confirmed service time”, are not surcharged;
- LESS than 2 (two) hours pre advanced notice, before “confirmed service time”, will be subject to a surcharge of 1 (one) hour per each tugboat and mooring launch, ADDITIONAL SERVICES TARIFF, and are subject to our fleet availability.
- The rates in this Tariff will not apply in case when vessels break loose from their mooring and other unforeseen circumstances. For assistances outside the mentioned areas in this tariff, special arrangement have to be made.

INVOICING

Rendered services invoices will be issued daily, based on Operations Department data collected on a daily basis. Invoices will be issued with four ways, with the original and duplicated sent to Customers. The Customer shall pay all bills rendered, within 30 days from the date of the invoice.

NO EXTRA CHARGES ON SATURDAYS, SUNDAYS OR HOLIDAYS

A bunker adjustment factor (BAF) is to be applied on the final value of invoices issued for tugboat and motor launch services.

GENERAL TERMS

These tariffs are due, within the limits of the Port of Lisbon, each identified as:

- (un)mooring, (un)anchoring, running along the pier;
- applicable to all tugs, mooring launch and team, requested for maneuver;
- predetermined maneuver areas (sections), with duration limit.
- including (de)mobilization (MOB/DEMOB);
- “lumpsum”, on a 24/7 regime (in addition legal rate of VAT)
- per Gross Tonnage (GT) class for all ships maneuvered;
- duration [Maneuver starts until resources are dismissed] – REGULAR TABLE;
- waiting time between “confirmed service time” and its actual start, if any, will be considered as additional time - ADDITIONAL SERVICES TABLE;
- time counting is interrupted in case of a failure on a tugboat or motor launch, preventing the maneuver to proceed;
- represents maximum charges to be applicable in the year 2017.
- charges for tug services rendered, are accounted on ½ (half-hour) periods, and mooring launches on indivisible hour periods;
- tugboat, mooring launches and team not related with ship maneuver as referred on the scope and GENERAL TABLE, are to be considered additional services being applicable the ADDITIONAL SERVICES TABLE;
- PTL provide Tugs, Mooring Launches and Team, to the Hirer and the Hirer hereby accepts the company providing services also subject to the terms and conditions as set out in the UK Standard Conditions for Towage and other Services (Revised 1986) as well as the company “General Operation Conditions, available on www.towagelisbon.pt.
- The agreement between the Tug owner and the Hirer is and shall be governed by English Law and the Tug owner and the Hirer hereby accept subject to the provision contained in sub-clause (b) hereof the exclusive jurisdiction of the English Courts.