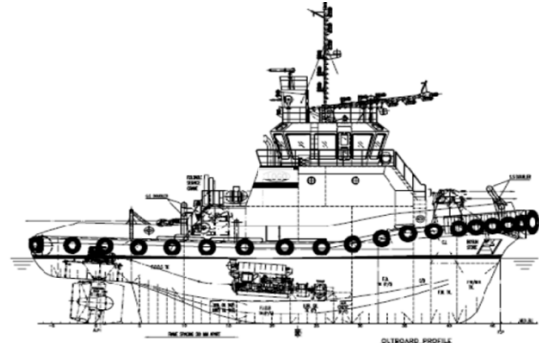


TUGBOAT TECHNICAL DATA:

N/M "MONTEMURO"



SHIP MAIN DATA:

- IMO Nr.: 9438937
- Building Shipyard: Jiangsu Wuxi Shipyard, Co. Lda. (China)
- Hull Nr.: 1248
- Construction Year: 2007

CLASSIFICATION SOCIETY:

- BUREAU VERITAS (BV)

CLASS:

- BV I ✕ Hull ✕ Mach, Tug, Unrestricted Navigation

INSURANCE COMPANY:

- LUSITÂNIA MAR

P&I

- CARINA

SHIP DATA

- Length O.A.: 28,00 m
- Beam M'L'D: 9,80 m
- Depth M'L'D: 4,90 m
- Draught (designed): 4,00 m

DISPLACEMENT:

- 130 T

LIGHT SHIP

- 269 T

MAX. FREE RUNNING SPEED:

- 12 Knots

BOLLARD PULL:

- 45 MT

GROSS TONNAGE:

- 318

NET TONNAGE:

- 95

REGISTER PORT:

SETÚBAL, PORTUGAL

REGISTER Nr.:

- S - 67 - RC

ACCOMMODATIONS:

- 8

CAPACITIES (APPROX.):

- Gasoil: 180 m³
- Fresh Water: 33 m³
- Ballast: 33 m³

MAIN ENGINE (2UN)

2xYANMAR, type 8N21A-EN (Power: 2x1.800 bhp @ 900 RPM)

AUXILIAR ENGINES (2UN)

2xVOLVO, type D7AT (Power: 99kW@1.500RPM /each)

PROPULSION SYSTEM (2 UN):

2xSCHOTTEL SRP 1010

FIRE FIGHTING SYSTEM

- 1 Pump driven by BB M.(capacity of 1500 m³/h @ 12,5 bar)
- 2 water/foam monitors – each capacity: 600 m³/h

DECK EQUIPMENT

- AP single drum towing winch (with local & bridge command), windlass, towing hook, deck crane, stern roller
- Main towing wire: 600 m x 42 mm Ø

RADIO AND NAVIGATION AIS:

- HF/MF, 2xVHF, 2xRadar, GPS, Sounder, Auto-pilot, Navtex, AIS
- MMSI: 263602560
- Inmarsat C: 426300167 e 426300168
- GMDSS: A1 + A2 + A3
- e-mail: montumuro@rebonave.pt
- Call Sign: CSYU4

OWNER:

- REBONAVE – Reboques e Assistência Naval, S.A.